

anSRS4u

ANSWERS FOR YOU

National Institutes of Health

Presented by **Sponsored Research Services**



TEXAS A&M UNIVERSITY
Division of Research



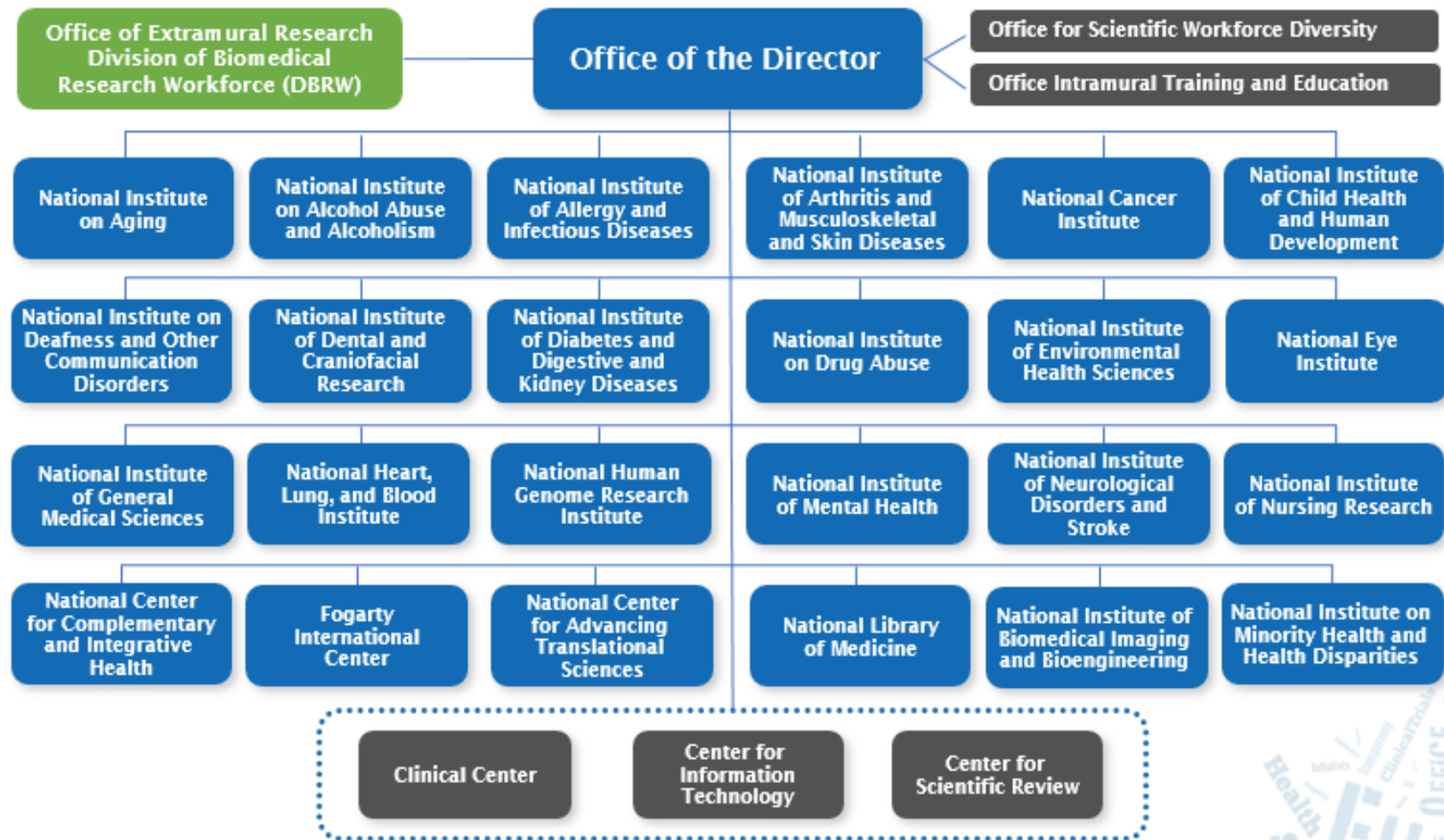


NIH Clinical Center

NIH Grants by the Numbers

- More than 80 percent of NIH's funding is awarded for extramural research
- Extramural researchers submitted 58,872 applications.
- NIH funded 11,332 grants, leading to a 20.6 percent success rate.
- The average award's total cost was \$581,293, an increase of 2.6% percent from FY 2020
- About 10% of the budget is for intramural research in its own laboratories

NIH includes 27 Institutes and Centers (IC)

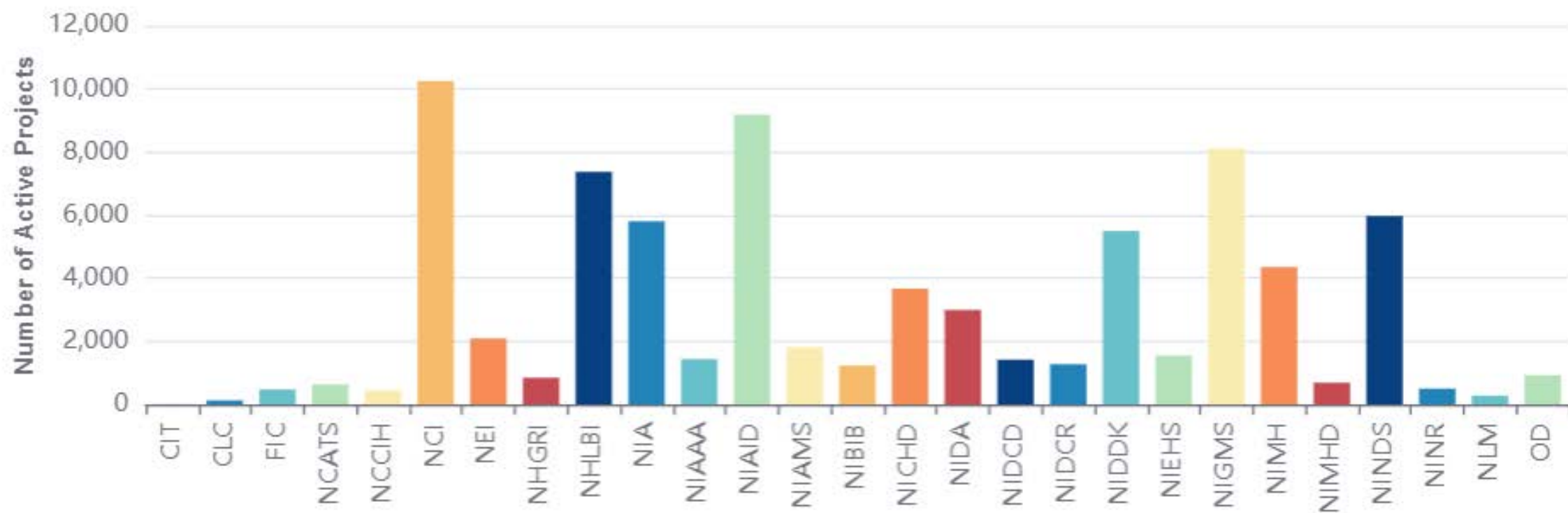


National Institutes of Health
Office of Extramural Research



Active Projects by Institute/Center

Select a bar to view projects for an Institute/Center



Understand NIH: Finding the Right Fit for Your Research

- Where's the Money?
- Institute and Center Missions and Priorities
- NIH's Matchmaker Tool - [RePORT](#) \ [RePORTER](#) ([nih.gov](#))

Matchmaker

Enter abstracts or other scientific text to find potential Program Officials, ICs, and review panels for your research. ?

15,000 characters left

☒ Similar Projects
☐ Similar Program Officials

Reset

Search

an**SRS**4u
ANSWERS FOR YOU

Types of NIH Funding

Research Grants (R Series)	R01, R03, R15, R21, R25, R56
Career and Development Awards (K Series)	K01
Research Training and Fellowships (T and F) (Ruth L. Kirschstein National Research Service Awards)	T32, T35, F31, F32, F33
Program Project / Center Grants (P series)	P01, P20, P30
Cooperative Agreements (U series)	U01
“Grant” v. “Cooperative Agreement” v. “Contract”	What’s the difference?

Standard Due Dates

New R01s	February 5, June 5, October 5
Renewals and Resubmissions of R01s	March 5, July 5, November 5
New R21s (Exploratory Development Awards) and R03s (Small Research Grant Program)	February 16, June 16, October 16
Renewals and Resubmission of R21s, R33s and R03s	March 16, July 16, November 16
New K Awards (Research Career Development)	February 12, June 12, October 12
Renewal and Resubmission of K Awards	March 12, July 12, November 12
R15s (Academic Research Enhancement Award)	February 25, June 25, October 25
F Awards (Fellowships)	April 8, August 8, December 8

NIH Policy Publications

- NIH Grants Policy Statement (NIHGPS)
 - Makes available, in a single document, the policy requirements that serve as the terms and conditions of NIH grant awards
- NIH Guide for Grants and Contracts
 - Official publication for **NIH grant policies, guidelines and funding opportunities**. Published daily, and a table of contents weekly.
 - Policy notices published in the NIH Guide for Grants and Contracts supersede information in the NIH Grants Policy Statement. NIH incorporates these notices into the annual update of the NIH Grants Policy Statement.

an **SRS**4u
ANSWERS FOR YOU

Funding Opportunity Announcements (FOA)

All applications are submitted in response to a Funding Opportunity Announcement (FOA) published in the [*NIH Guide for Grants and Contracts*](#) and posted on Grants.gov.

- **RFA** – Request for Applications – one receipt date (typically) and funds set aside to fund (grants or cooperative agreements)
- **RFP** – Request for Proposal (contracts)
- **PA** – Program Announcement: both solicited and unsolicited (aka parent announcements); growing use of Notices of Special Interest (NOSI) rather than topic-specific PAs, replacing IC-issued PAs
- **PAR** – Program Announcement reviewed by the Institute/Center not Center for Scientific Review (CSR)
- **PAS** – Program Announcement with set aside funds (not common)
- **NOSI** – Notice of Special Interest – IC(s) research priority that typically directs applicants to use a parent PA to apply

New and Early-Stage Investigators

- PI is considered a New Investigator if they have not previously competed successfully as PD/PI for a substantial independent research award.
- An ESI is a New Investigator who is within 10 years of completing his/her terminal research degree.
- The NIH intends to support New Investigators at success rates comparable to those for established investigators submitting new application for R01 support.

Requires Two Systems to Work Together



Grants.gov – single online Federal portal to find and apply for Federal grant funding involving some 900 grant programs within 26 grant making agencies granting over \$350 billion in annual awards



eRA Commons – the NIH system used by NIH and other HHS components that allows applicants/grantees to electronically receive and transmit application and award information after the application has been submitted to Grants.gov.

Important!

Applicant responsibility to ensure applications complete entire submission process—all the way through to the eRA Commons.

an **SRS**4u
ANSWERS FOR YOU

SRS Process of Submitting an Application to NIH

1. Establish an eRA Commons registration
2. Submission through Cayuse
 - Proposal/application is linked to Cayuse from the Maestro log in
 - Data is entered into Cayuse
 - Submitted via System-to-System

eRA Commons

The screenshot shows the eRA Commons website. At the top, the header includes the "Electronic Research Administration" logo, "eRA Commons" text, "Sponsored by National Institutes of Health", and "Version 2.19.1.4". A navigation bar contains links for Home, Links, eRA Partners, and Help. On the right, a user status area says "Welcome Guest", "Institution: Not Affiliated", and "Authority:". The main content area features a "What's New on the Commons" section with system status, support tips, and electronic submission tips. A "Commons Login" section includes a username field (containing "cotting"), a password field, and "Login" and "Reset" buttons. A "Forgot Password?" link is also present. A "System Notification" section is empty. A "More Recent Features of Commons include:" section lists several new features like xTrain, eSNAP, Reference Letters, Internet Assisted Review (IAR), and Demo Facility. On the right, an "About the Commons" section lists links for Scope and Purpose, Frequently Asked Questions, Grantee Organization Registration, eRA Contacts, and Enter eRA NIH Commons Demo. Below that, a "Links" section lists various support and policy pages. At the bottom, there is contact information for the eRA Help Desk, a footer with logos for the National Institutes of Health and the Department of Health and Human Services, copyright information, and the Grants.gov logo with the tagline "FIND. APPLY. SUCCEED."

Electronic Research Administration
eRA Commons
Sponsored by National Institutes of Health
Version 2.19.1.4

Home Links eRA Partners Help

Welcome Guest
Institution: Not Affiliated
Authority:

What's New on the Commons

SYSTEM STATUS: All systems are available.

Support Tip: We encourage you to take advantage of our new web support at <http://ithelpdesk.nih.gov/eRA/>. Please supply as much of the requested data as possible for faster service.

Electronic Submission Tip: Learn about the most frequent application errors at [Avoiding Common Errors](#).

Commons Login ?

* indicates required field.

Username *

cotting

Password *

password

Login Reset

[Forgot Password?](#)

System Notification

More Recent Features of Commons include:

- ◆ *****NEW*** xTrain has been released in pilot mode for all Federal Demonstration Partnership (FDP) institutions. For more information please contact the eRA Helpdesk.**
- ◆ **eSNAP** - Allows an institution to review non-competing grant data and submit a progress report online.
- ◆ **Reference Letters**: To submit a reference letter when requested by an applicant, please follow this link: [Submit Reference Letter](#)
- ◆ **Internet Assisted Review (IAR)** - Allows reviewer to submit critiques and preliminary scores for applications they are reviewing. Allows Reviewers, SRAs, and GTAs to view all critiques in preparation for a meeting. IAR creates a preliminary summary statement body containing submitted critiques for the SRA or GTA.
- ◆ **Demo Facility** - [Demo Facility](#) allows you to try most of the capabilities of the NIH eRA Commons in a sample environment.

About the Commons

- ▶ [Scope and Purpose](#)
- ▶ [Frequently Asked Questions](#)
- ▶ [Grantee Organization Registration](#)
- ▶ [eRA Contacts](#)
- ▶ [Enter eRA NIH Commons Demo](#)

Links

- ▶ [Commons Support Page](#)
- ▶ [CRISP](#)
- ▶ [eRA Home Page](#)
- ▶ [Electronic Application Submission](#)
- ▶ [Grants.gov](#)
- ▶ [iEdison](#)
- ▶ [Loan Repayment Program](#)
- ▶ [National Institutes of Health](#)
- ▶ [Public Access Policy Page](#)

Contact the eRA Help Desk Monday-Friday 7am-8pm Eastern Time at: Web: <http://ithelpdesk.nih.gov/eRA/> Phone: 301-402-7469; Toll Free: 866-504-9552; TTY: 301-451-5939. Contact initiated outside of business hours via Web or voice mail will be returned the next business day.

[\[Contact Us/Help Desk | Privacy Notice | Disclaimer | Accessibility \]](#)

National Institutes of Health (NIH)
9000 Rockville Pike
Bethesda, Maryland 20892

Department of Health and Human Services

© 2009 NIH. All Rights Reserved.
Screen Rendered: 01/09/2009 08:26:05 EST
Screen Id: COM0001

GRANTS.GOV™
FIND. APPLY. SUCCEED.™

eRA Commons is an electronic system designed to track grants from application through closing. It is a communication mechanism between NIH and the PI and the PI's institution.

<https://commons.era.nih.gov/commons/index.jsp>

Presented by Sponsored Research Services

an **SRS**4u
ANSWERS FOR YOU



TEXAS A&M UNIVERSITY
Division of Research

NIH Budget-Related Policies

- Modular budgets
- Requests of \$500,000 or more direct costs
- Consortium indirect costs
- Salary cap
- Graduate student compensation

Modular Budget Must Be Prepared If...

- Required by the FOA OR
- When the application will meet all of these requirements:
 - Is for an R01, R03, R15, R21, R34 or their cooperative agreement equivalent
 - Requests no more than \$250,000 direct costs (excluding any consortium F&A) in any budget period
 - Does not propose use of human fetal tissue from elective abortions
 - Is not from a foreign organization

an**SRS**4u
ANSWERS FOR YOU

Presented by **Sponsored Research Services**

Modular Budgets

- Direct costs requested in modules of \$25,000 up to \$250,000 each year, excluding any consortium F&A
- Routinely, same number of modules are requested each year.
- Typically, content of required budget justification limited to a Personnel Justification...a list of all personnel by position, level of effort (person months) and role without individual salary information
- Additional Narrative Justification is not required if the same number of modules are requested each year OR if in response to an FOA (e.g., R21) that cannot be spread evenly across budget periods. However, well-justified modular increments or reductions (e.g., equipment in the 1st year; consortium added in 3rd year) may be requested but require additional explanation in the Narrative Justification.
- SRS uses special modular template to produce internal budget

an**SRS**4u
ANSWERS FOR YOU

Requesting \$500,000 or More in Any Year

- Prior approval needed to request \$500,000 or more in direct costs in any budget period, excluding consortium F&A.
- Also applies to a group of applications meeting the \$500,000 threshold in the aggregate even if no single application in the group requests that much.
- PI must contact an IC Program Officer in writing or by **phone no later than 6 weeks before submission** and include a cover letter with the application identifying the Program Officer contacted and the IC that has agreed to accept the application.
- Prior approval not required for applications submitted to RFAs that include specific budget limits in excess of \$500,000.
- Check *NIH-GPS 2.3.7.2*

Consortium Indirect Costs

- For FOAs that include a direct cost limit, NIH policy excludes consortium/contractual F&A when determining if a applicant is in compliance with a given FOA's direct cost limitation.
- For example, with the modular budget format, consortium/contractual F&A costs are not factored into this direct cost limit, but instead, may be requested in addition to the \$250,000.
- Check *NIH-GPS 2.3.7.1*

Salary Cap

Since 1990, Congress has **legislatively mandated** a salary cap for individuals under NIH grants and cooperative agreements. This is still in effect.

...Appropriations Act of 2020 continues to restrict the amount of direct salary of an individual under an NIH grant or cooperative agreement to Executive Level II of the Federal Executive pay scale. That level effective January 2, 2022 and currently in force is \$203,700.

<https://grants.nih.gov/grants/guide/notice-files/NOT-OD-22-076.html>

an**SRS**4u
ANSWERS FOR YOU

Graduate Student Compensation

The maximum amount awarded for a graduate student (including salary, fringe benefits, and tuition remission) cannot be greater than the zero level NRSA postdoctoral award.

The institution may re-budget and pay a higher amount.

<https://www.niaid.nih.gov/grants-contracts/salary-cap-stipends>

Proposal Parts

- Example R01 – varies per activity code
- Title should be short and descriptive Maximum space is 81 characters
- Project Summary/abstract – 30 lines of text
- Project Narrative – three sentences
- Introduction to Resubmissions and Revision Applications – 1 page
- Specific Aims – 1 page
- Research Strategy – 12 pages

Biographical Sketches

- NIH encourages applicants to use [SciENcv](#) to generate their biosketches.
- Required Sections
 - A. Personal Statement
 - B. Positions, Scientific Appointments, and Honors
 - C. Contributions to Science
 - D. Scholastic Performance - only used the fellowship version

Proposal Parts and Pieces....

- **Bibliography and References Cited**
- **Appendix (only if allowed by RFA)**
- **Resource Sharing** – See New NIH Policy on Data Management and Sharing, Effective January 25, 2023

Specific Aims

- Limited to one page. It is by far the most important page of the application
- Many applications are won or lost depending on how precisely stated and how compelling the hypothesis and specific aims are presented
- Brief narrative paragraph or two that concisely states the issue or problem to be addressed, describes the long-term goals or objectives of the project and clearly states the hypothesis to be tested
- Followed by a numbered list of the Specific Aims

Research Strategy

The R01 application allows for a maximum of 12 pages

- **Significance**
- **Innovation**
- **Approach**

GET READY: New NIH Policy on Data Management and Sharing, Effective January 25, 2023

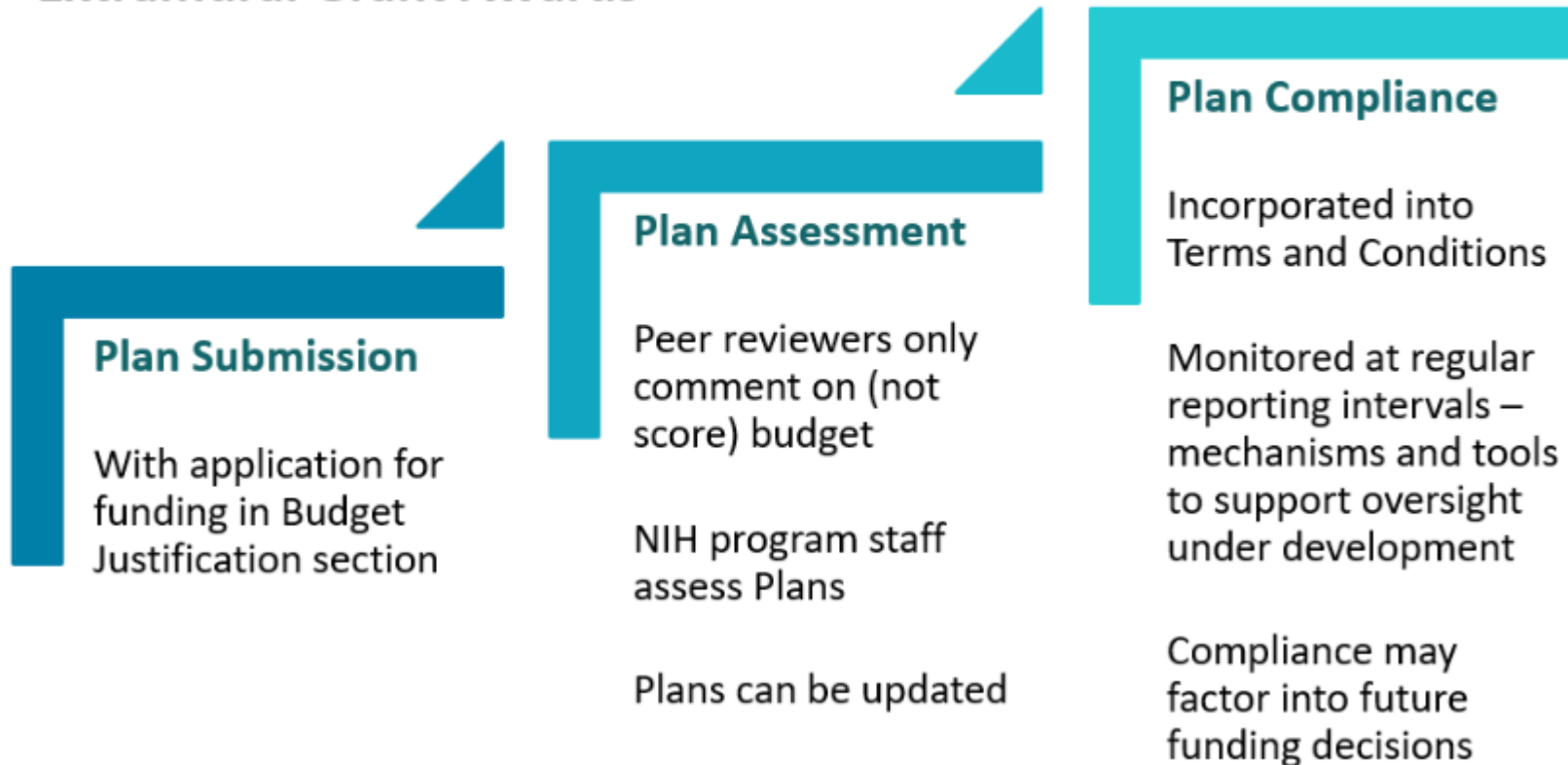
- NIH requires researchers to submit a Data Management and Sharing Plan. This policy applies to all research, funded or conducted in whole or in part by NIH, that results in the generation of scientific data.
- New NIH FORM-H Grant Application Forms – Other Plan(s) attachment field
- Plan will be two pages or less
- NIH Data Sharing webpage <https://sharing.nih.gov>
- Check Institute/center for specified data repositories



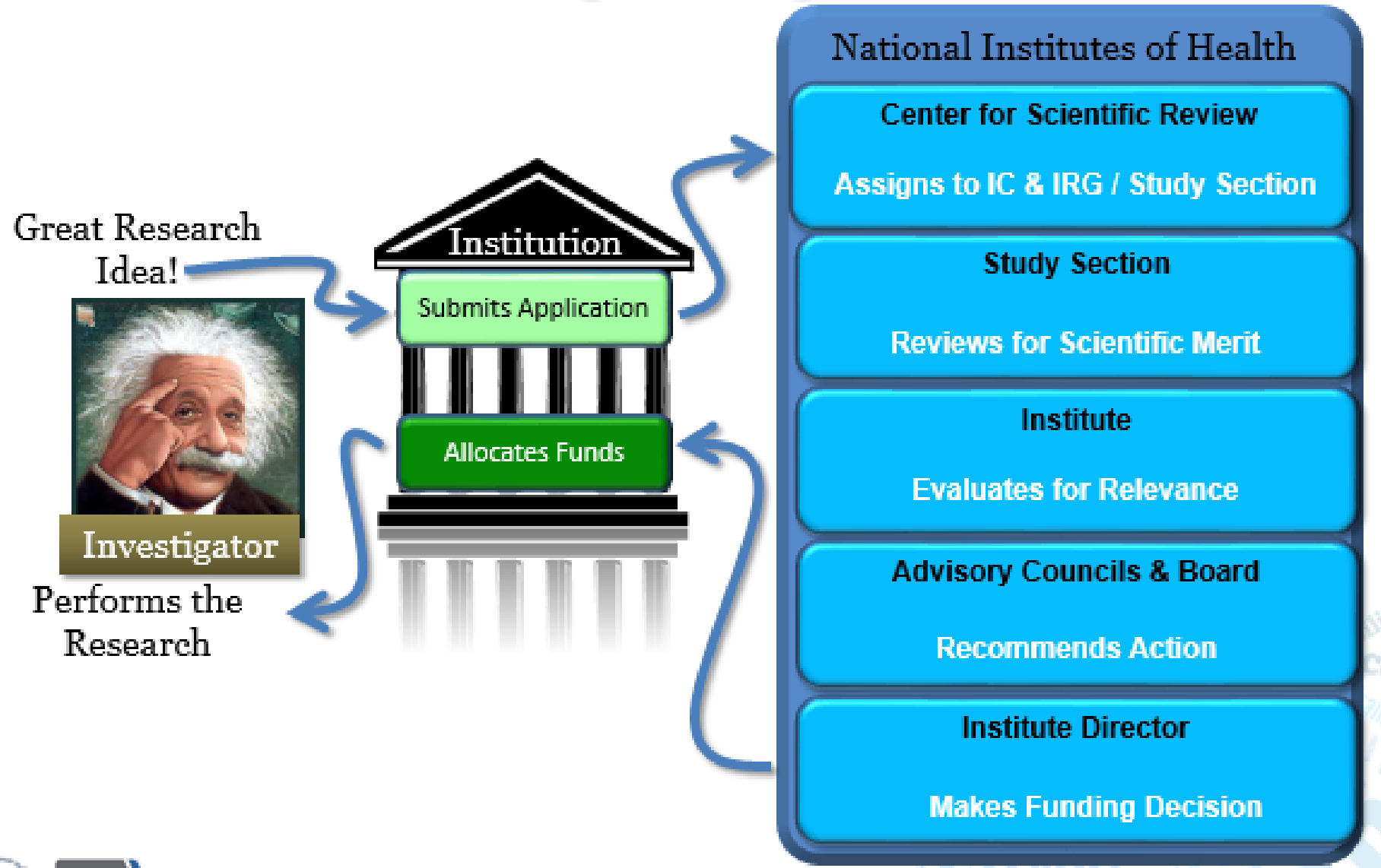
NIH Policy for Data Management and Sharing

Plan Submission and Review

Extramural Grant Awards*



How does a grant get funded?



Merit Review Criteria

- **Significance**
- **Innovation**
- **Approach**
- **Investigator**
- **Environment**

After Proposal Submission

- **Just In Time (JIT)** – Mechanism used by NIH to request more timely information prior to making the final award decision
- Some of the items requested include **Other Support** for all key personnel identified in the proposal
- **IRB** or **IACUC** approval dates if project includes human or animal subjects
- **Human Subject Education** Information (documentation of HS protections training)

Other Support

- Sufficient levels of effort are committed
- No scientific, budgetary, or commitment overlap.
 - Scientific overlap occurs when substantially the same research is proposed in more than one application.
 - Budgetary overlap occurs budgetary items are requested but already are provided by another source.
 - Commitment overlap occurs when an individual's time commitment exceeds 100 percent.
- Note the requirement for PIs and senior/key personnel to individually electronically sign and date the form

Timing of Other Support Submission

- Just-in-Time, after review when the application is under consideration for funding.
- Research Performance Progress Report (RPPR)
- Immediate notification of undisclosed Other Support. When a recipient organization discovers that a PI or other Senior/Key personnel on an active NIH grant failed to disclose Other Support information outside of Just-in-Time or the RPPR, as applicable, the recipient must submit updated Other Support to the Grants Management Specialist named in the Notice of Award as soon as it becomes known

Responsible Conduct of Research Training Requirement

- Responsible Conduct of Research Training
- Effective since January 25, 2010
- Affects certain types of awards (F, K, R25, R36, T)
- Applies to all trainees, fellows, students and post docs who work on these projects
- ***Must incorporate formal & informal training and mentoring (including face-to-face)***
- See NIH's NOT-OD-10-019
 - <http://grants.nih.gov/grants/guide/notice-files/NOT-OD-10-019.html>
- <http://www.research.vt.edu/research-integrity-office/announcements/2010/january/nih-new-training-requirements.php>

an**SRS**4u
ANSWERS FOR YOU



Funding for the next budget period?

- Except for “multi-year” awards, most NIH awards are funded one year at a time (budget period).
 - Competitive Segment is the project period (1-5 years)
 - Budget period is one year or less.
- Submitting an annual Progress Report through eRA Commons using the **RPPR** (Research Performance Progress Report).
- New Notice of Award for new budget period will be issued once annual report is accepted.

an**SRS**4u
ANSWERS FOR YOU

anSRS4u

ANSWERS FOR YOU

THANK YOU

Presented by **Sponsored Research Services**



TEXAS A&M UNIVERSITY
Division of Research